



## 底特律中文学校2022-23学年实体课安排 (9/7/2022)

1. 所有人须测体温佩戴口罩才能进入教学楼。必须无新冠症状，**一周内**与新冠病人无接触史。家长没有特殊原因不能进入教学楼。
2. 学校早上8:45 AM 开门，放学后11:15 AM 关门。学校工作人员和值班家长分穿橘色和黄色马甲在教学楼出入口和楼内值班。
3. 上实体课学生的家长整个学年必需值班三次。各班家长代表会安排值班登记。值班家长务必8:30 AM到学校报到。
4. 学校按教室分布分五个进口供学生按班级分别进出教学楼(见附图)。除了主进口 (Entrance #3) 外，其它进口上课时间将关闭。
  - 1) **Entrance 1:** 一年级。 **Entrance 2:** K & 二年级。 **Entrance 3:** Pre-K, 三, 四年级, 双语一年级和AP。 **Entrance 4:** 五, 六, 七年级。 **Entrance 5:** 八, 九, 十年级。
  - 2) 幼儿园小班 (Pre-K) 和双语一年级的学生可由家长 (一人) 从 Exit 3 进入到教室接送。
  - 3) 一年级 (Entrance 1), K和二年级 (Entrance 2) 学生家长在门口接送孩子。学生进门后，由值班家长有序带领进教室。
  - 4) 三、四年级学生进入教学楼后自己走进教室。学校在一楼和二楼走道上都安排义工指引学生。放学时学生由班级值班家长带到Entrance 3交给家长。
5. 为避免走道上拥挤，Pre-K, K, 1-1, 3-1, 4, 5, 7, 8, B1 班 10:55 AM (提前5分钟) 放学。课间休息 9:55 – 10:00 AM (5分钟)。  
— 1-2, 2, 3-2, 4, 6, 9, 10 班, AP 11:00 AM (正常时间) 放学。 课间休息 10:00 – 10:10 AM (10分钟)。
6. 11:15 AM 以后未被领走的孩子会被安排在主进口 (Entrance #3) 外面区域等候，有值班人员看管直到11:30 AM。因特殊原因迟到的家长请到那里接孩子。11:15 AM以后接孩子将按每分钟\$1收取照看费用。
7. 学校会安排教室中学生座位以保证**安全社交距离**，并为每个班级提供消毒液。在教室里学生不要去触摸老师的用具。课间不建议学生在楼道随意走动。低年级学生由值班家长统一带领去洗手间。学生未经老师允许不能擅自离开教室区。
8. 家长如果发现孩子有发热等不适症状，请尽早向老师请假。不要让孩子带病来校上课。如学生或家长出现新冠症状，请及时告知老师及学校。以便学校第一时间根据情况作出调整，如暂时转为网课等。
9. 教学区内不允许食用任何食物。建议学生自己带水。

根据疫情的发展以及政府和学区的要求，学校会适当修改规定。以更安全、有效地组织教学工作。





## ACSGD 2022-23 School Year In-Person Class Safety Protocols (9/7/2022)

1. People entering the school building must wear face mask, check temperature, no symptoms, and no contact with COVID-19 patients in one weeks. Parents will not be allowed to enter the building without special permission.
2. School **opens at 8:45 am** and **closes at 11:15 am**. School staff and parents on duty wear orange and yellow vests.
3. **The parents of in-person class must do volunteer service 3 times per school year. The on duty parent must report to school at 8:30 am.**
4. Five entrances of the school building are designated to different classes based on the classroom locations. When classes start, only the main entrance (Entrance #3) will be open and all others will be closed.  
**1) Entrance 1:** 1<sup>st</sup> grade. **Entrance 2:** K & 2<sup>nd</sup> grade. **Entrance 3:** Pre-K, AP, Bilingual 1, 3<sup>rd</sup> & 4<sup>th</sup> Grade. **Entrance 4:** 5<sup>th</sup>, 6<sup>th</sup>, 7<sup>th</sup> grade. **Entrance 5:** 8<sup>th</sup>, 9<sup>th</sup>, 10<sup>th</sup> Grade.  
**2) The parents of Pre-K and Bilingual 1 (B1) students (one person per family) can send and pick up their children at the classroom.**  
**3) Parents of K, 1<sup>st</sup> & 2<sup>nd</sup> grades can send the students to the designated entrances. The volunteers will lead them to the classrooms.**  
**4) The students of 3<sup>rd</sup> and 4<sup>th</sup> grade will go to the classrooms by themselves. The volunteers will be on both 1<sup>st</sup> floor and 2<sup>nd</sup> floor to guide them. After school, the class on duty parents will send students to Exit 3 to meet their parents.**
5. To avoid crowded, the dismissal time of **Pre-K, K, 1-1, 3, 4, 5, 7, 8, B1 classes is 10:55 am**. The Break time is **9:55 – 10:00 am**.  
— the dismissal time of **1-2, 2, 3, 4, 6, 9, 10 classes is 11:00 am**. The break time is **10:00 – 10:10 am**.
6. After **11:15 am** those young students (4<sup>th</sup> grade and below) will wait at the main exit (Entrance #3) under the supervision of the staff until 11:30 am. If parents come after **11:15 am**, they will be charged a later fee of \$1/minute.
7. The seats in the classroom will be arranged to keep a safety distance. Hand sanitizer will be provided to each classroom. Students should not touch the teacher's equipment in the classroom.
8. If a student has fever etc. symptoms, parents should tell the teacher and don't send the student to the school. If students or parents have COVID-19 symptom, please report to school immediately. So school can do the arrangement accordingly.
9. Eating food is prohibited inside of the school building. Please bring your own water.

**This protocol will be modified or changed based on the pandemic situation and the changes of the State guidelines, as well as the protocol of Derby Middle school, to ensure the safety of our students, teachers, parents and school staff.**

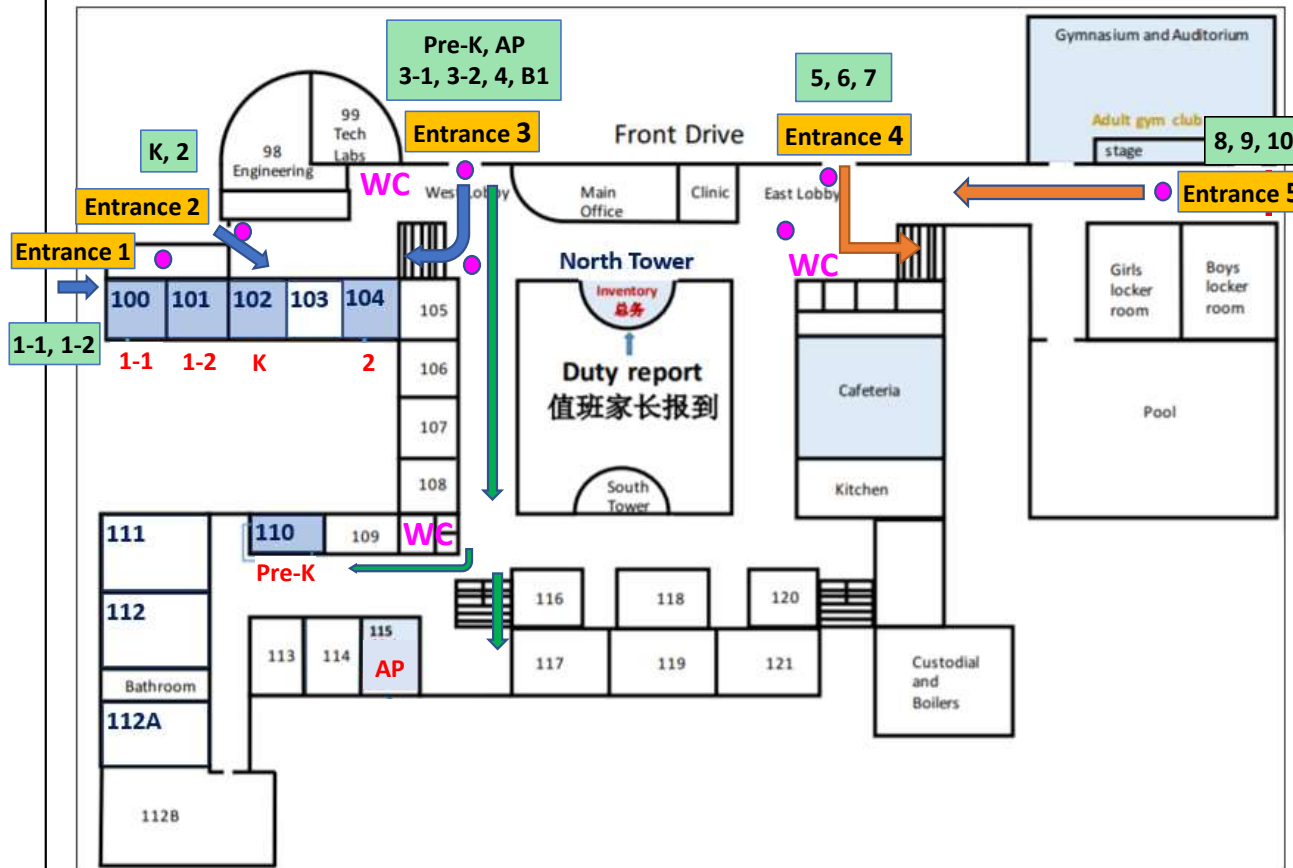




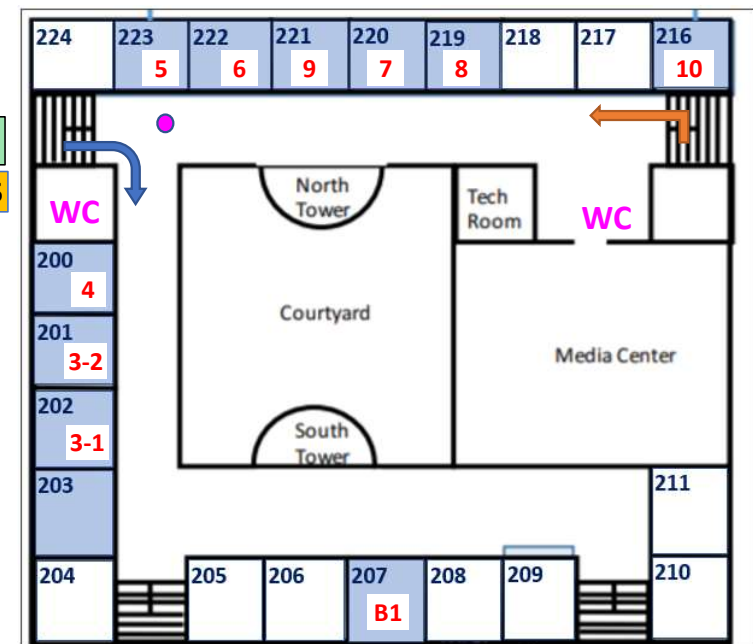
# 实体课教室安排 ACSGD Classrooms

1300 Derby Road,  
Birmingham, MI 48009

Derby Classroom Layout (Level 1)



Derby Classroom Layout (Level 2)



**Black:** Derby classroom number  
**Red:** Chinese class number  
**Green:** Assigned classes for each Exit  
**Pink dot:** Parent on duty

9/7/2022



# 学生按班级进出学校出入口安排

1300 Derby Road,  
Birmingham, MI 48009

